

WEEKLY BULLETIN ON OUTBREAKS AND OTHER EMERGENCIES

Week 30: 22 to 28 July 2024
Data as reported by: 17:00; 28 July 2024

5

New events

124

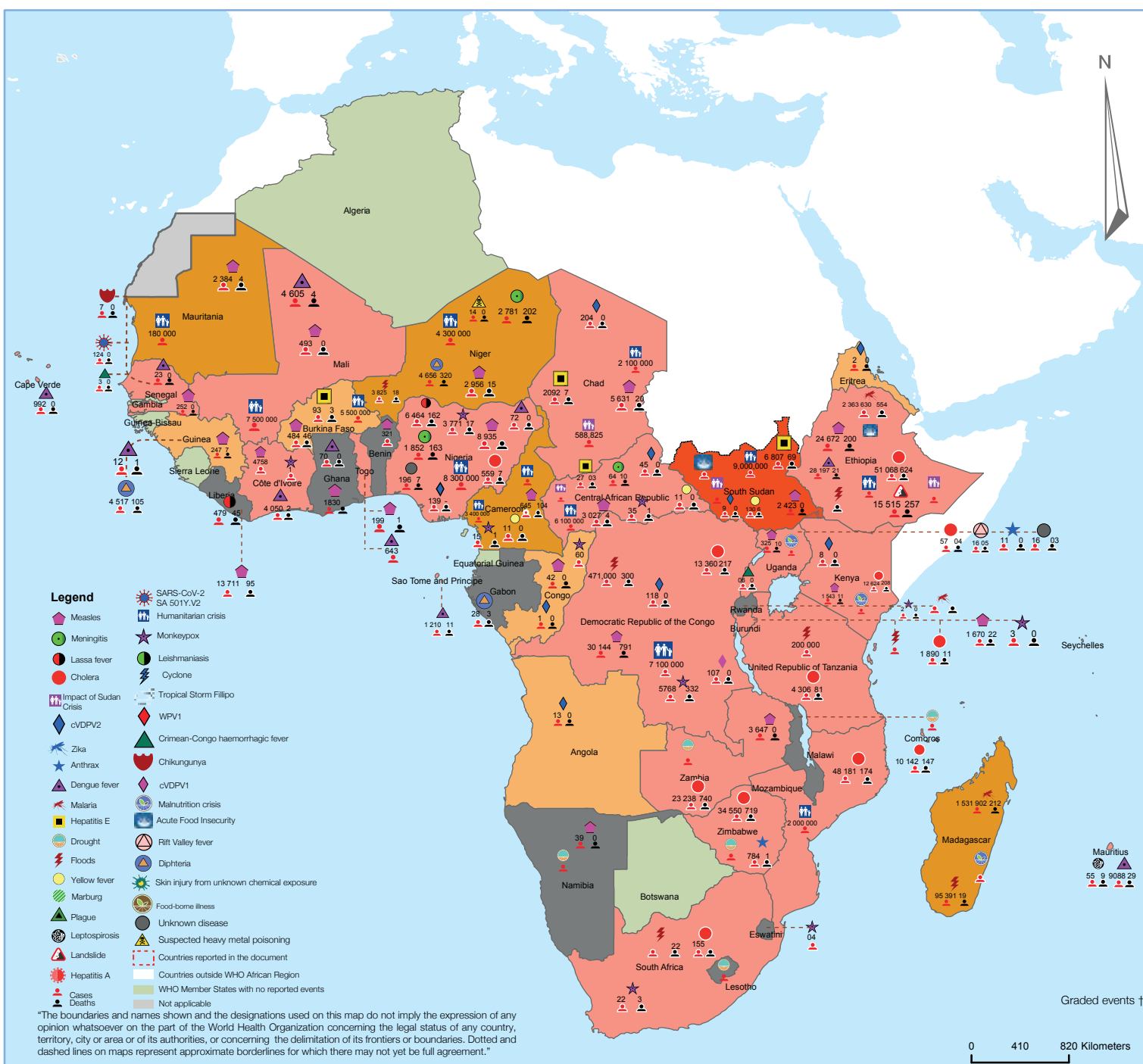
Ongoing events

94

Outbreaks

35

Humanitarian crises



6

Grade 3 events

5

Grade 2 events

0

Grade 1 events

1

Protracted 3 events

5

Protracted 2 events

0

Protracted 1 events

60

Ungraded events

Overview

Contents

1 Overview

2 - 7 Ongoing events

8 IDSR Report

9 All events currently being monitored

This Weekly Bulletin focuses on public health emergencies occurring in the WHO African region. This week's articles cover:

➤ [Food insecurity in Lesotho](#)

➤ [Diphtheria in Guinea](#)

For each of these events, a brief description, followed by public health measures implemented and an interpretation of the situation, is provided.

A table is provided at the end of the bulletin with information on all new and ongoing public health events currently being monitored in the region, as well as recent events that have been controlled and closed.

Major issues include

➤ Lesotho is experiencing the negative impacts of climate change, including more frequent extreme weather events like droughts, soil erosion, and reduced soil fertility. These factors have significantly impacted livelihoods, incomes, food security, and the country's agriculture-based economy. The food insecurity situation in Lesotho is alarming. The government's efforts to provide humanitarian assistance, subsidize agricultural inputs, and support vulnerable households through social protection programs are crucial. However, the situation will likely worsen without significantly improving household purchasing power and food access. Future actions should focus on strengthening the resilience of agricultural systems, enhancing income-generating opportunities, and ensuring timely and adequate humanitarian responses to mitigate the impact of recurring climatic shocks.

Lesotho

Food Insecurity

Approx

293 000 in need

EVENT DESCRIPTION

Lesotho's ongoing food insecurity crisis is primarily driven by drought, high food prices, and low household incomes. About 293 000 people (19.0%) are experiencing high levels of acute food insecurity, classified as IPC Phase 3 (Crisis). This situation is worsened by the prolonged dry spells and high temperatures experienced during the crucial crop growth stage from January to March 2024, significantly reducing agricultural output. The southern districts, particularly Mafeteng, Mophale's Hoek, Qacha's Nek, and Quthing, are the hardest hit, with many households facing severe challenges in accessing adequate food supplies.

Despite a timely start to the agricultural season in October 2023, Lesotho faced critical challenges that hindered food production. The farmland was reduced by 32.0% compared to the previous year due to the high cost of seeds and fertilizers, and the dry spells further impacted crop yields. Consequently, maize production, a staple crop, decreased by 52.0% compared to 2023. The reduced harvest has left many households with food stocks that will only suffice until July 2024, compelling them to rely on market purchases when food prices are soaring.

The food insecurity situation is projected to worsen from October 2024 to March 2025, coinciding with the lean season. During this time, approximately 403 000 people (27.0% of the population) are expected to face IPC Phase 3 (Crisis) or higher levels of food insecurity. Of these, 29,000 people are anticipated to be in IPC Phase 4 (Emergency). The La Niña phenomenon, expected to bring above-average rainfall, may exacerbate food access issues by causing waterlogging and negatively impacting crop production. This potential challenge underscores the need for proactive measures to mitigate its impact.

Lesotho's reliance on food imports, mainly from South Africa, is critical in maintaining food availability. However, high prices and inflation pose significant barriers to food access for poorer households. The country's unemployment rate, high inflation, and reduced income from remittances and casual labour further limit households' purchasing power, exacerbating the severity of the crisis. This underscores the need for sustainable solutions to reduce the country's dependence on external food sources.

PUBLIC HEALTH ACTIONS

- The government has allocated \$5.3 million for cash or food payments to assist 180 000 vulnerable people through community-based projects between June and December 2024.
- The government is continuing the agricultural input subsidy program, providing seeds and fertilisers at reduced costs to encourage planting despite the anticipated La Niña conditions.
- Local purchases of wheat, beans, and maize are being distributed to vulnerable households, ensuring food security while supporting local farmers.
- The Child Grants Program has been expanded to reach 64 457 households, benefiting 151 371 children.
- Ongoing nutrition interventions aim to maintain acceptable levels of acute malnutrition, emphasising exclusive breastfeeding and appropriate feeding practices.
- Despite the challenges, markets in Lesotho remain functional, providing a stable supply chain for food and non-food items.
- The government has implemented public works programs to provide income opportunities for vulnerable populations.

SITUATION INTERPRETATION

The food insecurity crisis in Lesotho results from compounding factors, including climatic shocks, economic challenges, and structural vulnerabilities in the agricultural sector. The situation requires immediate and sustained interventions to prevent a further escalation of the crisis, particularly as the lean season approaches.



© World Vision

Guinea

6 071

Cases

3

Deaths

0.2%

CFR

Diphtheria

EVENT DESCRIPTION

Since Week 27, 2023, Guinea has been experiencing a diphtheria outbreak affecting several regions nationwide. Seven regions have been affected: Kankan, Faranah, Labé, Mamou, Kindia, Conakry, and N'Zérékoré, with Kankan being the most affected. Siguiri health district in Kankan has been severely impacted. Despite ongoing public health interventions, new cases continue to emerge, emphasizing the need for sustained efforts in surveillance, vaccination, and community engagement to control the disease's spread.

In Week 28, 2024, 83 new suspected cases were reported in six districts: Siguiri, Kankan, Mandiana, Forecariah, Conakry, and Dalaba. Siguiri reported the most cases, 69 (83.0%). Additionally, 274 contacts were identified in the Kankan region, highlighting the need for continued contact tracing and surveillance efforts to control the outbreak.

Since the outbreak began in Week 28, 2024, 6 071 suspected cases have been reported, with 5 451 clinically compatible cases, 109 epidemiologically linked cases, 82 laboratory-confirmed cases, and 427 non-cases. A total of 135 deaths have been recorded.

The age distribution of cases is notable. The 6–10-year-old age group is the most affected, accounting for 23.0% of cases (1 205). This is followed by the 11–15-year age group, which accounts for 19.0% of cases (1 034). Children aged 0–5 years represent 17.0% of cases (928). Furthermore, females make up 59.0% of the suspected cases.

PUBLIC HEALTH ACTIONS

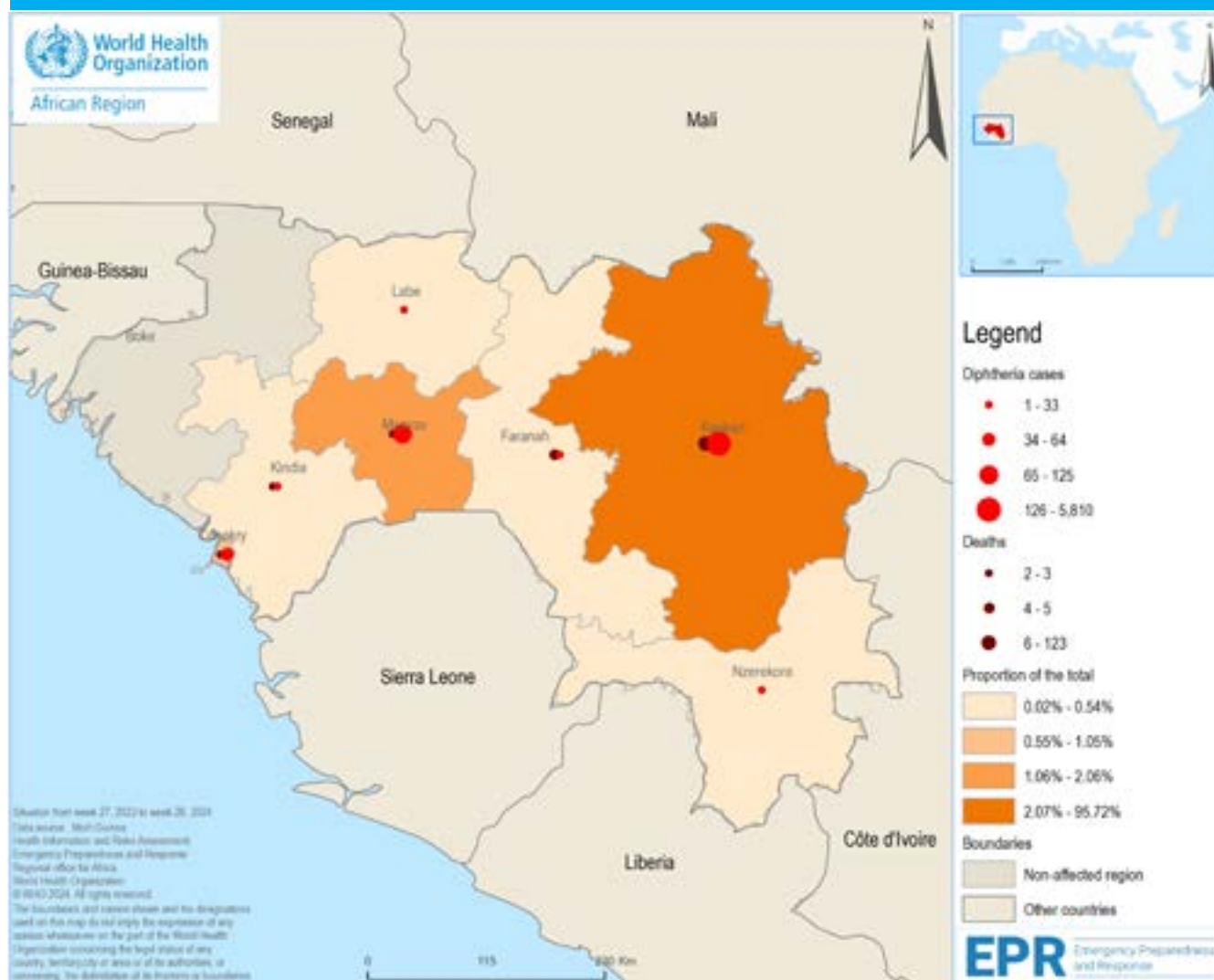
- ▶ The Ministry of Health and partners are conducting joint supervision of the vaccination campaign and holding regular coordination meetings, including Incident Management System meetings.
- ▶ Continuous surveillance, monitoring, and reporting of cases are carried out across the country.
- ▶ Samples are being tested for diphtheria at the reference laboratory INSP in Conakry for confirmation.
- ▶ Antibiotics and diphtheria antitoxin are being provided for patient care.
- ▶ Continuous training is being conducted for health workers on infection prevention and control.
- ▶ With support from the World Health Organization, the Ministry of Health conducted a vaccination campaign for children aged 5–15 in Kintinian and Doko health areas of Siguiri health district from July 10–14, 2024, vaccinating 78 158 children.

- ▶ Three community dialogues were held in Kintinian and Doko/Kourémalé health areas to raise awareness and encourage preventive measures.

SITUATION INTERPRETATION

The ongoing diphtheria outbreak in Guinea remains a significant public health concern, necessitating continued and strengthened efforts in vaccination, surveillance, case management, and community engagement. The collaborative efforts of the Ministry of Health, international partners, and local communities are vital to contain the outbreak, minimise mortality, and prevent new cases.

Distribution of suspected cases and deaths of Diphtheria in Guinea by region, Week 27, 2023 — Week 28, 2024



 World Health Organization

All events currently being monitored by WHO AFRO

Country	Event	Grade	Date notified to WCO	Start of reporting period	End of reporting period	Total cases	Cases Confirmed	Deaths	CFR
New Events									
Burundi	Mpox	Grade 3	25-Jul-24	25-Jul-24	25-Jul-24	3	3		0.0%
On 25 July 2024, the Ministry of Health of Burundi declared an outbreak of Mpox following confirmation of three cases by the National Reference Laboratory of the National Institute of Public Health. These cases were identified on 22 July at Kamenge University Hospital, Kamenge Military Hospital, and Isare Health District. They presented with symptoms including fever, joint pain, and a widespread rash. Samples collected during a multidisciplinary investigation tested positive for mpox on 25 July.									
Ethiopia	Landslides	Ungraded	23-Jul-24	23-Jul-24	24-Jul-24	15,515		257	
At least 257 people have reportedly died, and about 15 515 have been affected by a landslide incident on 21 and 22 July 2024, following heavy rains in a mountainous area in two kebeles of Geza Gofa Woreda in Gofa Zone, South Ethiopia Region. The death toll is expected to rise to up to 500 people .									
Kenya	Hepatitis A	Ungraded	23-Jul-24	1-Jan-24	23-Jul-24	19	19	3	15.8%
Since January 2024, confirmed cases of hepatitis A through PCR (polymerase chain reaction) are reported from Uasin Gishu county. As of 23 July 2024, a total of 19 cases with three deaths (CFR 15.8%) are reported. The cases were reported from five sub counties: Kapsaret, Kesses, Moiben, Soy and Turbo. Among the 19 total cases reported, 14 cases are students (74%).									
Lesotho	Drought/food insecurity	Ungraded	22-Jul-24	12-Jul-24	12-Jul-24	-	-	-	
On 12 July 2024, following the extreme El Niño induced drought conditions, the Prime Minister of Lesotho declared a National Food Insecurity Disaster effective until 31 March 2025. The total food insecure population for the consumption year 2024/2025 is estimated at 699 049, compared to 581 730 in 2023/2024, reflecting a 20% increase and a further deterioration of food security. The entire country is projected to be at Crisis level (IPC Phase 3) for the period, necessitating urgent action to save lives and protect livelihoods									
Rwanda	MPox	Grade 3	24-Jul-24	24-Jul-24	24-Jul-24	2	2		0.0%
On 24 July 2024, MOH confirmed two cases of mpox using PCR. Both have a history of travel to DRC. The cases include a 33-year-old female trader who was identified at POE and is currently isolated in Rusizi district and a 34-year-old male who is currently isolated in Kibagaba Hospital, Gasabo district. A total of 11 contacts are being followed up daily.									
Ongoing Events									
Angola	Poliomyelitis (cVDPV2)	Grade 2	15-May-24	15-May-24	7-Jul-24	13	13		0.0%
On 3 May, 2024, Angolan health authorities announced the detection of polio in Chitato Municipality, Lunda Norte province, which borders the Democratic Republic of Congo. Currently a total of 10 laboratory confirmed poliovirus were notified in the provinces of Luanda, Huambo, Lunda Norte and Moxico. Of these, four were detected in children under five and six in the environment..									
Benin	Measles	Ungraded	3-Jul-24	1-Jan-24	23-Jun-24	728	321		0.0%
A measles outbreak has been ongoing in Benin, from week 1 through week 25, 2024 (ending 23 June), with a total of 728 suspected cases of measles, including 288 confirmed IgM+ cases, 33 clinically compatible cases are reported with the incidence rate of 24.9 per 1 million population									
Burkina Faso	Humanitarian crisis (Sahel Region)	Protracted 2	1-Jan-19	1-Jan-19	18-Apr-24	5,500,000	5,500,000	-	-
Since 2015, the security situation in the Sahel and Eastern Burkina Faso has gradually deteriorated due to attacks by armed groups. Access to healthcare services remains a major challenge for the affected population. As of February 2024, 5.5 million people needed humanitarian assistance, 3.2 million of which are children and over 2.1 million IDPs registered, and 5 478 schools closed.									
Burkina Faso	Hepatitis E	Ungraded	6-Jun-24	4-Jan-24	1-Jun-24	93	8	3	3.2%
From 4 January to 1 June 2024, a total of 93 suspected cases of hepatitis E were reported from Kaya health district of the North central region. Eight out of 63 samples tested positive for hepatitis E by PCR. The median age of the cases is 22 and women represent 47.4% of the cases. Forty-six (48.5%) of the 93 suspected cases are internally displaced persons.									
Burkina Faso	Measles	Ungraded	6-Feb-24	14-Jan-24	28-May-24	9,904	484	46	0.5%
Burkina Faso is experiencing a decrease in measles cases. Between week 1 and week 21 of 2024, a total of 9 904 suspected measles cases, resulting in 46 deaths, were recorded. This downward trend is observed in all nine health districts that conducted the anticipated reactive campaign. Currently only four health districts have active outbreaks of measles.									
Burundi	Flood	Grade 2	1-Jan-24	1-Sep-23	3-Jun-24	-	-	-	
Since the beginning of the rainy season in September 2023, Burundi has been affected by heavy rains, floods and landslides, exacerbated by the El niño phenomenon. The most affected health districts are located in the western part of the country, including Cibitoke, Bubanza, Rumonge, Makamba and Bujumbura.									
Burundi	Cholera	Grade 3	1-Jan-23	14-Dec-22	1-Jun-24	1,89		11	0.6%
Burundi faces cholera outbreaks almost every year in some areas. The ongoing cholera outbreak was officially declared on 1 January 2023. As of 1 June 2024, a total of 1 890 cases, 11 deaths (CFR 0.6%), have been reported since the start of the outbreak.									
Burundi	Measles	Ungraded	15-Feb-24	1-Jan-23	12-Feb-24	1,67	1,67	22	1.3%
On 14 February 2024, Burundi's Ministry of Health reported a measles outbreak, with 20 of the country's 49 health districts experiencing active outbreaks. These districts were identified as having unvaccinated children in the 2022 National Vaccination Coverage Survey. In 2023, there were 1 670 confirmed cases resulting in 22 deaths, representing a case fatality rate of 1.3%. Among the confirmed cases, 55% were aged 6-59 months, and 82% were under 15 years old. From 1 January to 12 February 2024, 34 deaths were reported in five health districts.									

[Go to overview](#)
[Go to map of the outbreaks](#)

Cameroon	Humanitarian crisis (North-West & South-West)	Protracted 2	1-Oct-16	27-Jun-18	7-May-24	3,400,000	-	-	-
In the North-West and South-West regions, the unstable security situation and persistent violence are exacerbating humanitarian needs. Affected people continue to flee their homes to neighbouring villages and communities. By May 2024, the following observations were made: 3.4M people in need, 2.3M people targeted, 1M IDPs, 658k Returnees and 489K Refugees and Asylum Seekers.									
Cameroon	Humanitarian crisis (Sahel Region)	Protracted 2	31-Dec-13	27-Jun-17	13-Feb-24	-	-	-	-
The Far North region of Cameroon is still facing humanitarian crisis. The region bordering Nigeria and Chad and Lake Chad remains the most affected. Between August and September 2023, nearly 6 000 newly displaced people were registered in Mokolo district following repeated attacks by non-state armed groups. More than 2 200 new asylum seekers/refugees were registered for the same period at Gourenouel transit site, in Mokolo district of Mayo-Tsanaga department.									
Cameroon	Measles	Ungraded	2-Apr-19	1-Jan-24	31-Mar-24	645	232	104	16.1%
From Week 1 to Week 13 (ending 31 March 2024), 645 suspected measles cases, including 104 deaths (CFR 16%), were reported in Cameroon. A cumulative total of 232 cases were confirmed, including 129 IgM positive, 88 epidemiologically linked, and 15 clinically compatible. In 2023, 6 088 confirmed measles cases and at least 75 related deaths were reported in Cameroon.									
Cameroon	Mpox	Grade 3	24-Feb-22	1-Jan-24	4-Apr-24	15	2	1	6.7%
From 1 January to 4 April 2024, 15 suspected cases of Mpox including 2 laboratory-confirmed and 1 death have been reported. From 1 January to 28 December 2023, 113 suspected cases of Mpox, including 27 laboratory-confirmed and no death were reported. In 2022, 18 confirmed cases and three deaths were reported in the country.									
Cameroon	Yellow Fever	Ungraded	20-Nov-23	23-Jan-23	14-Jul-24	11	5		0.0%
From week 1 to week 28 of 2024, Cameroon reported 11 plaque reduction neutralization test (PRNT) positive yellow fever cases across seven regions. Among these PRNT positive cases, five have been classified as confirmed cases in four regions: Adamawa, Centre, Littoral, and Nord Regions. Additionally, 11 cases are currently awaiting PRNT results.									
Cape Verde	Dengue	Grade 3	6-Nov-23	6-Nov-23	24-Mar-24	992	543		0.0%
On 6 November 2023, the Ministry of Health Surveillance Service reported two confirmed cases of Dengue through Polymerase Chain Reaction testing and one borderline case in Praia City, Santiago Island, Cabo Verde. The same day three more suspected cases were reported from the Central Hospital. As of 11 March 2024, a total of 992 suspected cases, including 543 confirmed cases and no deaths, were reported.									
Central African Republic	Humanitarian crisis	Protracted 2	11-Dec-13	11-Dec-13	5-Jun-24	6,100,000	-	-	-
The Central African Republic has been facing a humanitarian crisis for more than a decade following military-political conflicts. Of the country's 6.1 million inhabitants, 2.8 million will need humanitarian assistance in 2024. More than 522 000 people are currently internally displaced, 2.5 million suffer from food insecurity, and 756 000 are CAR refugees.									
Central African Republic	Impact of Sudan crisis in CAR	Grade 3	1-May-23	1-May-23	31-Jul-24	-	-	-	-
CAR is the least affected among the four AFRO countries regarding the ongoing Sudan conflict As of 06 May 2024, there were 71, 000 forcibly displaced people from Sudan who arrived in CAR since 15 April 2023. Out of this number, 6 158 are returnees and 23 286 Sudanese refugees/asylum seekers.									
Central African Republic	Hepatitis E	Ungraded	13-Jun-24	14-Apr-24	2-Jun-24	27	6	3	11.1%
The Hepatitis E outbreak was confirmed in Vakaga prefecture, in the East of CAR. The hotspot is Sikikédé health area. From week 15 to week 22, a total of 27 suspected cases, six confirmed were reported, including three deaths. Out of the six laboratory-confirmed cases, one died and was a Sudanese refugee. Four health areas reported cases: Sikikédé (21), Birao (2), Am Dafock (2) and Zinzir (2). Birao health area hosts around 25 000 Sudanese refugees.									
Central African Republic	Measles	Ungraded	13-Mar-22	1-Jan-23	26-Nov-23	3,027	1,145	4	0.1%
At the end of epi-week 47, 2023, the country recorded 3 027 suspected cases and four deaths. Since the start of 2023, 15 out of 35 health districts (43%) experienced measles outbreak.									
Central African Republic	Meningitis	Ungraded	27-Mar-24	22-Mar-24	26-Apr-24	64	5	10	15.6%
On 22 March 2024, health authorities declared a meningitis outbreak in Batangafo-Kabo district. From week 7 to week 16 (ending 21 April 2024), a total of 64 suspected meningitis cases including 10 deaths (CFR: 16%) were reported from three communes of Batangafo-Kabo health district, namely Kabo, Sido and Ouaki communes. A total of 52 cerebrospinal fluid samples were collected from the suspected cases and analyzed at Institut Pasteur of Bangui. Bacterial pathogens were identified in 5 (9.6%) samples by PCR test. Neisseria meningitidis serotype W135 and Streptococcus pneumoniae were identified in 3 and 2 samples respectively.									
Central African Republic	Mpox	Grade 3	3-Mar-22	4-Mar-22	26-Nov-23	35	35	1	2.9%
From 4 March 2022 to 26 November 2023, 35 confirmed cases of Mpox and one death have been reported in the country. Since the start of 2023, the country has reported 18 laboratory-confirmed cases, including one death.									
Central African Republic	Poliomyelitis (cVDPV2)	Grade 2	24-May-19	24-May-19	31-Jul-24	45	45		0.0%
A total of 14 cases were reported in the country in 2023, including six in 2022. There were no new cases reported in the country as of week 29 of 2024 The number of confirmed cases reported in 2023 was revised to 14 and last date of detection is 07 October 2023.									

Central African Republic	Yellow Fever	Ungraded	12-Jun-23	1-Jan-23	21-Apr-24	11	5		0.0%
Chad has recorded one new probable yellow fever case, which tested positive using the plaque reduction neutralization test (PRNT) in week 15, in the Vakaga health district, bringing the total number of probable cases in 2024 to six. Other probable cases for the year have been reported in the Mbaïki and Kémo health districts. In 2023, five confirmed cases of yellow fever were recorded for the following districts: Sangha-Mbaéré (1), Berbérati (1), Bambari (2), and Bossembélé (1). The number of confirmed cases this year has been reviewed.									
Chad	Humanitarian crisis (Sahel region)	Protracted 2	11-Feb-22	1-Mar-16	16-Jun-24	2,100,000	-	-	-
As of June 2024, Eastern Chad has received over 608 715 Sudanese refugees, of which 58.0% are women and 21.0% are children under five years. The crisis has resulted in 7 187 injuries and 350 deaths. Over 2.1 million people are affected, including both refugees and host populations, and 1 213 515 individuals are in urgent need of humanitarian assistance.									
Chad	Impact of Sudan crisis in Chad	Grade 3	15-Apr-23	15-Apr-23	10-May-24	-	-	-	-
Chad is the AFRO country most affected by the armed conflict in Sudan, hosting about 1 million refugees. These Sudanese refugees are mainly hosted in the refugee's camps across Ennedi Est, Wadi Fira, Ouaddai and Sila provinces. From 15 April 2023 to 3 May 2024, about 588 825 Sudanese refugees have been listed including 96 181 that have crossed the border since January 2024. Most new arrivals are women and children (88%), and 14% are persons with special needs.									
Chad	Hepatitis E	Ungraded	17-Feb-24	2-Jan-24	28-Apr-24	2,092	36	7	0.3%
From 2 January to 28 April 2024, a total of 2 092 suspected cases including 7 deaths (CFR 0.3%) were reported from two health districts of the Ouaddaï province (Adré and Hadjer-Hadid). Thirty-six (36) cases were laboratory-confirmed by RT-PCR at Institut Pasteur de Dakar between 1 and 19 March 2024. The most affected age groups are 6-17 years (1 113 cases) and 18-59 years (500 cases), representing 53.2% and 23.9% of the suspected cases, respectively. Males (1 160 cases; 55.4%) are the most affected.									
Chad	Measles	Ungraded	24-May-18	1-Jan-24	5-May-24	5,631		20	0.4%
From 1 January to 5 May 2024, 5 631 suspected measles cases, including 20 deaths, were recorded in the health districts of Moissala, Guelo, Dono Manga, Kouloudia, Arada, N'Djamena Centre, N'Djamena East, Gagai, Gore, N'Djamena North, Amtiman, Pala, Kouno, Massakory, and Koukou Angarana. Between Week 1 and Week 18 of 2024, 182 suspected cases were recorded in the crisis-affected provinces of the East, with no deaths reported.									
Chad	Poliomyelitis (cVDPV2)	Grade 2	18-Oct-19	9-Sep-19	31-Jul-24	204	204		0.0%
In 2023 there were a total of 55 cVDPV2 cases reported. In week 30 of 2024, there were 5 reported cases in Chad. 44 cVDPV2 cases were reported in 2022, 106 cVDPV2 cases were reported in 2020 from three different outbreaks, and nine others were reported in 2019. The last date of detection was 13 May 2024.									
Comoros	Cholera	Grade 3	2-Feb-24	2-Feb-24	25-Jun-24	10,142		147	1.4%
The cholera outbreak has been ongoing in Comoros since the first case was reported on 2 February 2024. As of 30 June 2024, a cumulative total of 10 142 cases had been reported, with the majority of cases reported from Ndzuwani (8 942 cases), followed by Ngazidja (625 cases) and Mwali (575 cases); 147 deaths (CFR 1.4%) were also reported.									
Congo	Measles	Ungraded	15-May-24	2-Apr-24	24-Jul-24	42	42		0.0%
Since the beginning of this year, there was an ongoing measles outbreak in Congo affecting three districts of Etoumbi (25 confirmed cases: 10 laboratory confirmed and 15 epi-link), Poto-poto (five confirmed cases: one through laboratory and four cases by epidemiological link) and Impfondo (12 confirmed cases: seven through laboratory and five by epidemiological link). As of 24 July 2024, there is only one confirmed measles case in Pointe Noire in Congo.									
Congo	Mpox	Grade 3	23-May-22	1-Jan-24	23-Apr-24	60	19		0.0%
From 9 January to 23 April 2024, a total of 60 suspected cases were reported from nine health districts in five departments: Cuvette, Likouala, Plateaux, Pointe-Noire and Brazzaville. From 22 August to 27 November 2023, 60 suspected cases, including 21 confirmed and 5 deaths (CFR 8.3%), were reported from four health districts in three departments: Brazzaville, Cuvette and Likouala.									
Congo	Poliomyelitis (cVDPV1)	Grade 2	21-Mar-23	1-Mar-23	31-Jul-24	1	1	-	-
No Circulating vaccine-derived poliovirus type 1 (cVDPV1) cases were reported this week. As of 31 July 2024, only one case was reported. The last update of detection was on 15 October 2022.									
Côte d'Ivoire	Dengue	Grade 3	10-Jul-23	19-Jun-23	11-May-24	4,05	332	2	0.0%
An outbreak of Dengue fever is ongoing in Ivory Coast. A total of 4 050 cases have been reported from 1 January 2023 to 11 May 2024, with 325 confirmed cases and 2 deaths (CFR 0.0%).									
Côte d'Ivoire	Measles	Ungraded	3-Jul-24	1-Jan-24	23-Jun-24	5,617	4,758		0.0%
The measles outbreak has been ongoing in Côte d'Ivoire; from week 1 through week 25, 2024 (ending 23 June), a total of 5 617 suspected cases of measles were reported, including 678 confirmed IgM+ cases and 4 080 clinically compatible cases. The incidence rate is 146 per 1 million population.									
Côte d'Ivoire	Mpox	Grade 3	5-Jul-24	5-Jul-24	5-Jul-24	1	1		
A case of Mpox was confirmed on 4 July 2024 in Côte d'Ivoire, in the San Pedro region (Tabou). The patient, a male in his 40s, has been isolated and is receiving care at a COVID-19 treatment center.									
Democratic Republic of the Congo	Flood	Ungraded	9-Jan-24	9-Jan-24	3-Jun-24	471		300	
Heavy rainfall between January and April triggered significant flooding in South Kivu and Tanganyika provinces, placing approximately 471 000 people at risk of increased humanitarian needs. The floods inundated around 1.1 million acres of land, including nearly 52,000 acres of cropland, in areas surrounding Lake Tanganyika and upstream from the Congo River basin. The ongoing El Niño season is expected to bring heavy rainfall, particularly to the central and northern regions, with forecasts indicating that the water level in Lake Tanganyika will continue to rise, peaking in late June.									
Democratic Republic of the Congo	Humanitarian crisis	Grade 3	20-Dec-16	17-Apr-17	11-May-24	7,100,000	-	-	-

The humanitarian crisis in the Democratic Republic of Congo has affected about six provinces, namely, North Kivu, South Kivu, Ituri, Tshopo and Tanganyika provinces. Currently, 7 100 000 people have been displaced since its onset. There are currently 522 410 new refugees. There have been various levels of security threats, widespread instability, and gang violence. At present, there are multiple outbreaks like, cholera, measles and Mpox.									
Democratic Republic of the Congo	Cholera	Grade 3	16-Jan-15	1-Jan-24	14-Apr-24	13,36	1,571	217	1.6%
From week 1 to week 15, 2024 (week ending 14 April), 13 360 suspected cholera cases, including 217 deaths (CFR 1.6%), were reported from 13/26 provinces. North Kivu, Haut Katanga, South Kivu, and Haut Lomami are the most affected provinces, accounting for 58.5% (n=7 815), 17.1% (n=2 287), 10.2% (n=1 365), and 9.2% (n=1 230) of cases respectively. The majority of deaths (59%) have been reported from the Haut Katanga province. In 2023, more than 62 000 cases and more than 700 deaths were reported.									
Democratic Republic of the Congo	Measles	Ungraded	12-Oct-21	1-Jan-24	17-Mar-24	30,144	1,178	791	2.6%
In 2023, a total of 311 500 suspected measles cases and 5 799 deaths were reported. This year, from week 1 through week 11 (ending 17 March), a total of 30 144 cases, 1 178 confirmed and 791 deaths have been reported so far; 18 out of 26 provinces have reported confirmed measles outbreaks since the beginning of this year.									
Democratic Republic of the Congo	Mpox	Grade 3	30-Mar-19	1-Jan-24	21-Apr-24	5,768	632	332	5.8%
In 2024, cumulatively from week 1 through week 16 (ending 21 April 2024), a total of 5 768 cases, 632 confirmed and 332 deaths (CFR 5.8%) have been reported in DRC; 19 out of 26 Provinces (73%) and 143 out of 519 health zones (28%) have reported at least one suspected case of mpox in 2024. In 2023, a total of 14 626 mpox cases and 654 deaths (CFR 4.5%) were reported.									
Democratic Republic of the Congo	Poliomyelitis (cVDPV1)	Grade 2	27-Aug-22	1-Jan-23	15-May-24	107	107		0.0%
As per the Global Polio Eradication Initiative (GPEI), no cVDPV1 case was reported this week. There is one case reported this year and 106 cases in 2023.									
Democratic Republic of the Congo	Poliomyelitis (cVDPV2)	Grade 2	26-Feb-21	1-Jan-23	15-May-24	118	118		0.0%
As per the Global Polio Eradication Initiative (GPEI), no cVDPV2 cases were reported this week. The number of 2023 cases remains 118.									
Ethiopia	Flood	Grade 2	15-May-24	1-May-24	10-Jul-24	-	-	-	
Heavy rains in April and early May caused flooding in several districts across the country, particularly in Afar, Amhara, Central Ethiopia, Oromia, Sidama, Somali, South Ethiopia, and Tigray regions. More than 590 000 people are reportedly affected and some 95 000 displaced, based on preliminary reports. The rains and the unusually heavy wind accompanying the rainy season this year have led to significant damage to houses, public infrastructure, and croplands. This has further limited the population's access to services and deepened vulnerabilities, particularly in areas already affected by conflict and violence, prolonged drought, as well as pre-existing poor road infrastructure.									
Ethiopia	Food insecurity (Horn of Africa crisis)	Grade 3	17-Feb-22	1-Jan-22	10-Jul-24	-	-	-	-
According to the Famine Early Warning Network (FEWNET), Crisis (IPC Phase 3) and Stressed (IPC Phase 2) outcomes are ongoing and expected to persist through September in many areas of northern Ethiopia and parts of the pastoral south and southeast, where humanitarian food assistance is significant and likely preventing worse outcomes. The food security situation is expected to deteriorate further, with more than 10 million people anticipated to be critically food insecure during the main lean season (July-September)									
Ethiopia	Humanitarian crisis (Northern Ethiopia)	Grade 3	4-Nov-20	4-Nov-20	4-Jul-24	-	-	-	-
In Ethiopia, it is reported that an estimated 4.5 million people are currently displaced in both rural and urban locations, mainly in Somali, Oromia and Tigray regions. The majority of the displacements are due to conflict, which peaked in 2021. About 56% of IDPs have been displaced for more than one year, 23% for two to four years and 1% for five or more years. The country continues to face a major humanitarian crisis caused by climate shocks, disease outbreaks and insecurity aggravated by economic and financial challenges. This makes 2024 an exceptional year in terms of compounded shocks, exacerbating negative humanitarian impacts on already vulnerable communities who have not fully recovered from events of recent years									
Ethiopia	Impact of Sudan crisis in Ethiopia	Grade 3	1-May-23	1-May-23	10-Jul-24	-	-	-	
Following the outbreak of armed conflict in Sudan on 15 April 2023, Ethiopia is receiving thousands of forcibly displaced people at two main points of entry (Metema and Kurmuk) along the land border between Sudan and Ethiopia. As of 30 June 2024, a total of 56 486 individuals in need of international protection crossed the border from Sudan to Ethiopia including 46 427 Sudanese and Non-Sudanese refugees/asylum seekers and 10 059 Ethiopian refugee returnees.									
Ethiopia	Cholera	Grade 3	17-Sep-22	1-Aug-22	14-Jul-24	51,068		624	1.2%
The ongoing cholera outbreak in Ethiopia started on 27 August 2022. As of 14 July 2024, a total of 51 068 cases, 624 deaths (CFR 1.2%) are reported. In 2024, from January a total of 19 832 cases and 149 deaths are reported									
Ethiopia	Dengue	Grade 3	16-May-23	10-May-23	2-Jul-24	28,197	28,197	21	0.0%
The dengue outbreak that started in April 2023 in two districts (Logia and Mille) is still ongoing. As of 2 July 2024, a total of 28 197 cases with 21 deaths are reported. In 2024, 2 539 cases and zero death are reported.									
Ethiopia	Malaria	Ungraded	20-Jun-24	1-Jan-24	23-Jun-24	2,363,630	170,969	554	0.0%
Since the beginning of this year, Ethiopia is experiencing a new malaria outbreak. From 1 January to 23 June 2024 (week 25), a total of 2 363 630 malaria cases and 554 deaths were reported nationwide. In Epidemiological week 25, there were 227 811 malaria cases and 71 deaths recorded. This marks a 7.2% increase in malaria cases compared to the previous week. Most malaria cases, over 75%, were reported from three regions: Oromia (42%), Amhara (21%) and Southwest Ethiopia (SWEPRS) (11%)									

Ethiopia	Measles	Ungraded	13-Apr-17	1-Jan-24	23-Jun-24	24,672		200	0.8%
Measles outbreak is still ongoing in Ethiopia. In 2024, from week 1 through week 25 (ending 23 June) a total of 24 672 cases and 200 deaths were reported. Currently, there are active measles outbreaks in 38 woredas across Oromia, Amhara, South Ethiopia, Sidama and Gambela Regions									
Gabon	Diphtheria	Ungraded	23-Jan-24	1-Dec-23	19-Mar-24	28	2	3	10.7%
On 23 January 2024, Cameroon reported a confirmed case of Diphtheria. The affected individual is a 9-year-old male from Bitam Health District in Gabon. The onset of symptoms occurred on 1 December 2023, and he sought medical consultation on 3 December 2023 in the Enongal health area, Ebolowa health district in Cameroon. The person died on 7 December 2023. The sample tested positive for Diphtheria on 23 January 2024. As of 19 March 2024, a total of 28 suspected cases, including 2 laboratory confirmed cases, 8 clinically compatible cases and three deaths (CFR: 10%) were notified.									
Ghana	Dengue	Grade 3	16-Jul-24	14-Jul-24	20-Jul-24	70	70		0%
On 14 July, the Ministry of Health of Ghana notified WHO of the confirmation of nine cases of Dengue in three districts of the Eastern Region. As of 20 July, 574 suspected cases including 70 confirmed cases of Dengue have been reported from seven districts.									
Ghana	Measles	Ungraded	1-Apr-24	1-Jan-24	19-Apr-24	1,83	350		0.0%
From January 2024 to April 2024, Ghana reported 350 confirmed measles cases across 14 of its 16 regions, with the highest number in the Northeast Region (61 cases). The majority of cases (61.4%) were in children aged 5 years or younger. Laboratory testing revealed various IgM positive cases, including 40 in Ashanti and 20 in Greater Accra. Males constituted 54% of the cases. Despite the widespread distribution, no measles-related deaths occurred.									
Guinea	Dengue	Grade 3	15-Jul-24	8-Jul-24	20-Jul-24	12	3	1	0.9%
There was one new confirmed case reported on 11 July 2024 giving a cumulative of 12 dengue cases (three confirmed) and one death reported in 2014.									
Guinea	Diphtheria	Grade 2	21-Aug-23	4-Jul-23	9-Apr-24	4,517	4,307	105	2.3%
An outbreak of diphtheria has been reported in the Kankan region of Guinea since 4 July 2023. As of 9 April 2024, 4 517 suspected cases were reported from the Kankan, Faranah, Labé, Mamou, Conakry and N'Zérékoré regions, including 4 307 confirmed cases and 105 deaths. Of the confirmed cases, 29 were laboratory-confirmed, 4 173 were clinically compatible and 105 were epidemiologically linked. The Siguiri health district in the Kankan region is the epicenter of the outbreak, with 98.4% of suspected cases reported.									
Guinea	Measles	Ungraded	3-Jul-24	1-Jan-24	23-Jun-24	1,076	247	7	0.7%
Measles outbreak is ongoing in Guinea, from week 1 through week 25, 2024 (ending 23 June), a total of 1 076 suspected measles cases were recorded including 247 confirmed cases. Seven deaths recorded in the regions of Conakry (1), Kindia (1) and N' Zérékoré (5) . The incidence rate per 1 million population is 31.1									
Kenya	Food insecurity (Horn of Africa crisis)	Grade 3	17-Feb-22	1-Jan-22	10-May-24	-	-	-	-
The key drivers of food insecurity in Kenya are high prices of staple foods, the impacts of El Niño and floods – resulting in the loss of livestock, damage to infrastructure, property, and farmland, - as well as localized resource-based and human-wildlife conflicts. During the projection period (April to June 2024), the forecasted MAM (March, April, and May) rains are expected to further improve the seasonal performance and thus improve the food security situation. Approximately, 1.2 million people (7 % of the population analyzed) are classified in IPC Phase 3 or above, including about 26 000 people classified in Phase 4 and 1.2 million in Phase 3.									
Kenya	Cholera	Grade 3	19-Oct-22	5-Oct-22	23-Jun-24	12,624		208	1.6%
This is the second wave since the beginning of 2024 - where there have been 392 cumulative cases and 3 deaths in 2024. Overall since the start of the outbreak, there have been 12,624 cases and 208 deaths with a CFR of 1.6%. The outbreak is affecting three counties: Tana River (60), Lamu (18) and Siaya (1). A total of 79 cases with one (1) death have been reported. Eight (8) cases have been confirmed by culture, and 76 RDT positive. Tana River County attack rate is 18.0 per 100,000, and the Garsen sub-county attack rate is 40.7 per 100,000.									
Kenya	Measles	Ungraded	29-Jun-22	1-Jan-23	13-Jun-24	1,543	199	11	0.7%
The measles outbreak has been continuous since January 2023. Nine counties are actively reporting measles cases; Garissa, Kilifi, Mombasa, Turkana, Samburu, Wajir, Meru, Kwale, and Mandera, since early 2024. A total of 1 543 cases with 11 deaths (CFR 0.8%) have been reported.									
Kenya	Poliomyelitis (cVDPV2)	Grade 2	6-Jul-23	26-May-23	29-May-24	8	8		0.0%
According to Global Polio Eradication Initiative, no cVDPV2 cases were reported this week. There have been eight cases reported in 2023.									
Liberia	Lassa Fever	Ungraded	3-Mar-22	6-Jan-22	5-Jun-24	479	151	45	9.4%
From 6 January 2022, to 30 May 2024, a cumulative total of 466 cases of Lassa Fever have been reported with 151 confirmed and 45 deaths (CFR 39%).									
Liberia	Measles	Ungraded	3-Feb-22	13-Dec-21	2-Jun-24	13,711	13,056	95	0.7%
Since the measles outbreak started on 13 December 2021, there have been 13 711 suspected cases, 13056 confirmed cases, and 95 deaths with CFR 0.7%, as of June 2, 2024. The highest affected is Montserrado with 5373 confirmed cases									
Madagascar	Cyclone Gamane/Flood	Grade 2	26-Feb-24	5-Feb-24	19-May-24	95,391	-	19	0.0%
Since weeks 6 and 7, 2024 heavy rainfall has triggered flooding in the central and northeastern parts of Madagascar. This has resulted in population displacements and the loss of homes and infrastructure, including roads, bridges, agriculture, health facilities, water, sanitation, and hygiene infrastructure. Seven regions have been affected.									
Madagascar	Malnutrition crisis	Protracted 2	1-Jul-21	1-Jan-21	17-Apr-24			-	-
The humanitarian situation in the Grand Sud remained fragile and is expected to deteriorate further, thus reversing the marginal gains made in 2023. Malnutrition rates are expected to reach IPC Phase 4 (Emergency) in Ikongo and Varika during the lean season. Nearly 196 500 children under five may suffer from acute malnutrition from October 2023 to April 2024. Two districts will reach a critical phase, nine will be in a serious phase, and four will be on alert for acute malnutrition between February and April 2024.									
Madagascar	Malaria	Ungraded	28-Feb-24	1-Jan-24	12-May-24	1,531,902		212	0.0%
Madagascar has been experiencing a malaria outbreak since last year and the same trend continues in 2024. From week 1 to week 19, 2024, a total of 1 531 902 cases and 212 deaths are reported.									
Malawi	Drought	Ungraded	26-Mar-24	28-Mar-24	28-Mar-24	-	-	-	-
Malawi formally declared a state of disaster on 23 March 2024 due to drought in 23 out of its 28 districts. Preliminary assessments conducted by the Malawian government suggest that approximately 44% of the country's corn crop has either failed or suffered significant damage, directly impacting 2 million households.									

Mali	Humanitarian crisis (Sahel region)	Protracted 2	11-Sep-17	11-Sep-17	24-Mar-24	7,500,000	7,500,000		0.0%
Mali is facing prolonged conflict, poverty, climate shocks, and growing insecurity. However, the current Humanitarian Response Plan for Mali needs to be more funded, with only 11% of the required funding secured for the 4.1M(million) people targeted. There has been a significant increase in IDPs in the regions of Kidal (32.8%) and Ménaka (20%). As of March 2024, over 7.1M people require humanitarian assistance.									
Mali	Dengue	Grade 3	12-Sep-23	1-Jan-24	26-May-24	4,605	614	4	0.1%
From 1 January to 26 May 2024, Mali reported 4 605 suspected cases of dengue including 614 confirmed cases and four deaths.									
Mali	Measles	Ungraded	20-Feb-18	1-Jan-24	26-May-24	493	277		0.0%
Between 1 January and 26 May 2024, 493 suspected cases of measles were reported, with 277 confirmed cases. During the same period in 2023, there were 288 confirmed cases, representing a 4% decrease in 2024 compared to the previous year.									
Mauritania	Influx of refugees from Mali (Sahel region)	Protracted 2	11-Mar-24	14-Mar-24	19-Mar-24	180	-	-	-%
The humanitarian situation in the Hodh Chargui region (HEC) of Mauritania is becoming critical with the massive arrival of thousands of Malian refugees fleeing insecurity and violence. It is estimated that over 180 000 refugees and returnees are registered or awaiting registration in the Bassiknou district. According to UNHCR data, over 40% are outside the formal camp system, many with livestock, putting pressure on natural resources (such as water and grazing land) and basic social services. Both displaced populations and host communities require protection, shelter, clean water, hygiene and sanitation facilities, as well as healthcare for their well-being.									
Mauritania	Measles	Ungraded	7-Mar-23	1-Jan-24	12-May-24	2,384	280	4	0.2%
Between 1 January and 12 May 2024, Mauritania reported 2 384 suspected measles cases across 49 districts, with 280 confirmed cases — 81 through epidemiological links and 199 via laboratory tests. In response, a vaccination campaign is scheduled from 28 May to 6 June 2024, targeting 1 943 636 children aged nine months to 14 years. This campaign will also incorporate the administration of vitamin A and mebendazole.									
Mauritius	Dengue	Grade 3	17-Dec-23	17-Dec-23	23-Jun-24	9,088	9,088	29	0.3%
The index for the ongoing dengue outbreak in Mauritius was reported on 11 December 2023, as of 23 June 2024, a total of 9 088 cases and 29 deaths (CFR 0.3%) have been reported.									
Mauritius	Leptospirosis	Ungraded	10-May-24	1-Jan-24	26-Jun-24	55	55	9	16.4%
On 4 May 2024, the Ministry of Health and wellness of Mauritius notified the public of a rising incidence of leptospirosis cases in Mauritius with a total of 20 cases reported since the beginning of 2024. As of 26 June 2024, a total of 55 cases and nine deaths are reported									
Mozambique	Humanitarian crisis in Cabo Delgado	Protracted 2	1-Jan-20	12-Oct-23	15-May-24	2,000,000	2,000,000	-	-
From 22 December 2022, 112 894 people have been displaced in Cabo Delgado due to NSAGs' attacks, including 91 239 farmers who abandoned their lands during harvest season. Children, women, and men comprise 62%, 23%, and 15% of the displaced. Food aid reached over 64,000 individuals, and 24,000 received shelter. By 5 March 2024, 154 children were missing, and 182 were unaccompanied. As of 15 May 2024, eight out of eleven provinces and at least 22 districts have reported cholera cases, with a cumulative total of 15,386 cases. The highest number of cases were reported from the provinces of Nampula, Tete, Cabo Delgado, and Zambezia. Additionally, there was a conjunctivitis outbreak affecting 1,225 people, with schools disrupted.									
Mozambique	Cholera	Grade 3	18-Apr-24	12-Oct-23	23-Jun-24	48,181	48,181	174	0.0%
The current cholera outbreak in the country began in Niassa province on 14 September 2022. As of 23 June 2024, there have been 8,024 cumulative cases in 2024 alone, including 18 deaths (CFR 0.2%). Epi week 25 saw a 33% decrease in cases and 0 deaths, with 3 out of 11 provinces (Maputo, Nampula, Sofala) reporting active outbreaks in the past month. However, all 3 of these provinces are experiencing downward trends in recent weeks.									
Namibia	Drought	Ungraded	31-May-24	22-May-24	22-May-24	-	-	-	-
On 22 May 2024, the Government of Namibia declared a State of Emergency following the worst drought the country has experienced in 100 years. One in five Namibians is considered food insecure, with over 331 000 households already enrolled in the government-funded drought relief program to support affected communities. This situation, driven by the El Niño-induced drought and concurrent floods in Southern Africa, despite current efforts, necessitates more focused attention and proactive measures from governments and partners. It is crucial to mobilize funds to enhance prevention programs aimed at mitigating climate risks. Furthermore, targeted and effective interventions are required to alleviate the hardships and suffering of the populations, particularly in light of the exacerbating presence of disease outbreaks.									
Namibia	Measles	Ungraded	7-Jun-24	1-Jan-24	5-Jun-24	39	6		0.0%
The Ministry of Health and Social Services (MoHSS) has reported a confirmed outbreak of Measles in Omaruru health district of Erongo Region,. Between 1 January and 5 June 2024, 39 suspected cases, including six confirmed cases, have been reported from the same health facility. All six confirmed cases have been reported among learners attending the same primary school									
Niger	Floods	Ungraded	12-Jun-24	10-Jun-24	13-Jun-24	3,825	-	18	
As of 10 June 2024, the heavy rains that have hit Niger since the beginning of the season (in May) across the entire national territory have resulted in the following: Four out of the eight regions in the country are affected, encompassing 18 departments, with the Maradi region being the most affected. A total of 499 households are affected, comprising 3,825 displaced persons. There have been 18 deaths, including 11 due to house collapses (a total of 329 households have collapsed). and 23 injuries have been recorded, including 12 in Maradi (52.2%).									
Niger	Humanitarian crisis (Sahel region)	Protracted 2	1-Feb-15	1-Feb-15	18-Apr-24	4,300,000	4,300,000		0.0%
Niger is contending with a severe humanitarian crisis due to regional instability in the Tillaberi, Maradi, Diffa, and Tahoua regions. The instability stems from conflicts spilling over from Mali, Burkina Faso, and Nigeria, compounded by the country's internal political turmoil following a military coup on 28 July 2023 — the third such coup in the Sahel in under three years. International sanctions, environmental challenges, deep-seated poverty, and frail social support have further strained the relief efforts. Despite these adversities, there has been a slight decrease in refugee and asylum seeker figures, although new arrivals from Chad, Mali, Burkina Faso, and Nigeria persist post-21 March 2024. Concurrently, Niger has seen the internally displaced population escalate dramatically, from 1.9 million in 2017 to 4.3 million individuals, which is 15% of the population in 2024, significantly amplifying the demand for humanitarian aid. Acute food insecurity currently afflicts 3.3 million residents, with an alarming 7.3 million more at risk of deteriorating conditions amid the ongoing turmoil.									

Niger	Diphtheria	Ungraded	28-Aug-23	4-Jul-23	19-Jun-24	5,367	4,656	320	6.0%
An outbreak of diphtheria has been confirmed in Matameye health district, Zinder region. The first case was reported on 17 July 2023. As of week number 24 of 2024, 5367 suspected cases, including 320 deaths (CFR 6 %) were reported. Public health response activities are ongoing in affected districts.									
Niger	Measles	Ungraded	5-Apr-22	1-Jan-24	11-May-24	2,956	467	15	0.5%
As of epidemiological week 19, a total of 2 956 suspected cases of measles were reported, including 467 confirmed cases and 15 deaths (case fatality rate: 0.5%), across 23 health districts in epidemic areas									
Niger	Meningitis	Ungraded	7-Dec-22	1-Jan-24	18-May-24	2,781	1,076	202	7.3%
Niger continues to notify meningitis cases. From epidemiological week 1 to week 20, 2024 , a total of 2781 suspected cases including 1076 confirmed cases and 202 deaths (CFR 7.3%) were notified in eight regions, namely Agadez, Diffa, Dosso, Maradi, Niamey, Tahoua, Tillabery and Zinder. Agadez and Niamey regions are the most affected.									
Niger	Suspected heavy metal poisoning	Ungraded	12-Jun-24	27-May-24	12-Jun-24	14			
A mysterious illness has been reported in Niger as of 27 May 2024 , cases present with symptoms like ascites, abdominal pain, weight loss, and vomiting. The index case began experiencing symptoms on 15 May . The patient's family of six has also been affected. All are suspected to have contracted the illness from an unknown source, potentially linked to drinking water from boreholes. Cases have been reported in four regions: Tahoua (2), Dosso (5), Maradi (6), and Tillaberry (1). No laboratory results are available. A multidisciplinary team has been deployed. Samples have been sent to CERMES, with results pending. Insecurity and population mobility are hindering the response. A lack of laboratory facilities for heavy metal testing is also a challenge.									
Nigeria	Humanitarian crisis (Sahel region)	Protracted 2	10-Oct-16	10-Oct-16	21-Mar-24	8,300,000	8,300,000		0.0%
People face emergency levels of food insecurity, with very high rates of severe acute malnutrition that could lead to death in Borno, Adamawa and Yobe states. As of week 11, 2024, over 6 million people are targeted for humanitarian aid, 8.3 million people need humanitarian assistance, 2.2 million IDPs, and 4.3 million people need food security aid. Due to the fluidity of the situation, the numbers are constantly changing.									
Nigeria	Cholera	Grade 3		1-Jan-24	24-Mar-24	559		7	1.3%
From 1 January to 24 March 2024, there were 559 suspected cholera cases reported in Nigeria, including seven deaths (CFR: 1.3%). Reports came from 18 states, with Bayelsa State registering 356 cases (64% of all suspected cases). Other affected states include Cross River (42 cases), Bauchi (38), Abia (24), Delta (24), Nasarawa (19), Ondo (11), Katsina (9), and Osun (8), accounting for 31% of the cases this year. Suspected cholera cases and deaths have decreased by 71% and 87%, respectively, compared to the same period in 2023. The most affected age groups are children under five years, followed by those aged 5-14 years.									
Nigeria	Dengue	Grade 3	1-Nov-23	1-Jan-23	24-Mar-24	72	14		0.0%
Nigeria is responding to Dengue outbreak that started in 2023. As of 3 March 2024, there has been 72 suspected cases reported with 14 confirmed and zero deaths since 19 December 2023.									
Nigeria	Lassa Fever	Ungraded	8-Jan-23	1-Jan-24	26-May-24	6,464	897	162	2.5%
As of week 21, of 2024, 6464 suspected cases, including 897 laboratory-confirmed cases, were reported, with 162 reported deaths among confirmed cases, resulting in a CFR of 18.1 %. Confirmed cases were reported from 28 states and 125 LGAs. three out of 36 states (Edo, Ondo, and Bauchi) account for 65% of confirmed cases.									
Nigeria	Measles	Ungraded	1-Apr-24	1-Jan-24	12-May-24	8,935	4,633		0.0%
Between 1 January and 12 May 2024, in Nigeria, 8 935 suspected measles cases were reported, with 1 141 confirmed cases, 3 373 confirmed through epidemiological link, and 119 classified as compatible. Additionally, there were 280 IgM positive rubella cases. The measles incidence rate is 18.4 per 1 000 000 population. Notably, 302 out of 774 districts (39%) have reached the epidemic threshold, indicating a significant outbreak.									
Nigeria	Meningitis	Ungraded	29-Jan-24	8-Oct-23	10-Mar-24	1,852	135	163	8.8%
Between 1 October 2023 and 10 March 2024, a total of 1852 suspected cases including 1135 confirmed cases and 163 deaths (CFR: 8.8%) were reported from 22 out of 33 states. Of the 135 confirmed cases, 119 (82%) were caused by Neisseria meningitidis serogroup C (NmC) while 5 cases (3.7%) were caused by streptococcus pneumoniae, 10 cases (7.4 %) by Haemophilus influenzae and 1 (0.7%) by Neisseria meningitidis serogroup X (NmX). As of 10 March 2024, the outbreak remains active in six states, namely Yobe, Jigawa, Bauchi, Gombe, Katsina, and Zamfara.									
Nigeria	Mpox	Grade 3	31-Jan-22	1-Jan-22	31-Dec-23	3,771	1,086	17	0.5%
Overall, since the re-emergence of Mpox in September 2017, 3771 suspected cases have been reported from 36 States and FCTs in the country. Of these 3771 suspected cases, 1086 (28.7%) were confirmed (with males predominantly affected) from 34 States and FCT. seventeen (17) deaths have been recorded since the re-emergence in 2017.									
Nigeria	Poliomyelitis (cVDPV2)	Grade 2	1-Jun-18	1-Jan-22	20-Mar-24	139	139	-	-
No cVDPV2 case was reported this week. There were four cases reported in 2024, 87 cVDPV2 cases reported in 2023 and 48 cases in 2022.									
Nigeria	Unknown disease	Ungraded	20-Mar-24	20-Mar-24	22-Apr-24	196		7	3.6%
On 20 March 2024, NCDC notified of the outbreak of an unknown illness through IDSR by the Sokoto State Ministry of Health. The index case presented is a 6-year-old girl from Isa LGA, who presented with symptoms including abdominal pain and distension, and vomiting on 6 February 2024. Cumulatively, from weeks 6 to week 15, a total of 196 cases with 7 deaths (CFR 3.6%) were reported. 70% are aged 0 – 10 years, followed by 11 – 20 years (20%), >30 years (6%), and 21 – 30 years (4%). 55.1% of the cases are female. Cases initially reported from Isa LGA, Sokoto State, with reports extending to Sabon Birni LGA (7 cases) in Sokoto State									
Rwanda	Malaria	Ungraded	1-Jul-24	26-May-24	7-Jul-24	-	-	-	-
From the epi week 21 to 25, 2024, malaria cases increased compared to the previous weeks of 2023, while the results of the analysis revealed that from week 26 to 27, 2024 the cases declined and did not surpass the epidemic thresholds									
Senegal	Chikungunya	Ungraded	8-Jun-23	1-Jan-24	26-May-24	7	7		0.0%
Between 1 January and 26 May 2024, Senegal reported seven new Chikungunya cases. The cases ranged from eight to 30 years old, with a median age of 21 years. Matam had the highest number of cases with three, followed by Tambacounda with two, and Dakar and Kolda each with one. The last reported case had an onset of symptoms on 26 April 2024.									
Senegal	COVID-19	Ungraded	24-Jun-24	24-Jun-24		124	78		0.0%
Of the 124 RDTs carried out on returning pilgrims carried out upon arrival to the airport, 78 cases were detected positive for SARS-CoV-2, including 36 cases confirmed by PCR.									

Senegal	Crimean-Congo haemorrhagic fever (CCHF)	Ungraded	26-Mar-24	22-Mar-24	26-Apr-24	3	3		0.0%
On 22 March 2024, the Institut Pasteur in Dakar (IPD) confirmed a case of Crimean-Congo Haemorrhagic fever (CCHF) in a 25-year-old male farmer. The patient, originally from the Guinguinéo district, probably contracted the disease while working in the Ndooffane district. Investigations are ongoing in all the areas visited by the patient. So far 11 samples collected from contacts at the Dakar hospital have tested negative. On 26 April 2024, WHO was informed of the confirmation of two additional CCHF cases in a 40-year-old male and a 25-year-old male from Pikine and Yeumbeul districts of Dakar respectively. Blood samples collected from the two male cases on 17 and 19 April 2024 respectively returned positive for CCHF on PCR on 25 April 2024. PCR testing returned negative for yellow fever, dengue, RVF, west nile, chikungunya, and zika. Both cases are alive. In-depth investigations are ongoing.									
Senegal	Dengue	Grade 3	14-Nov-22	31-Jan-23	12-May-24	23	23		0.0%
As of 12 May 2024, Senegal has reported a total of 23 confirmed dengue cases. The cases, ranging in age from 15 to 62 years with a median age of 32 years, include nine females and 14 males. The majority of cases have been reported in the Dakar region (15 cases, 65%), followed by Louga (4 cases, 17%), Saint-Louis (2 cases, 9%), Matam (1 case, 4%), and Thies (1 case, 4%). The first case was recorded on 1 January 2024, in Guediawaye, and the most recent case was on 4 March 2024, in Dakar-Ouest.									
Senegal	Measles	Ungraded	4-Jul-22	1-Jan-24	26-May-24	252	252		0.0%
Between 1 January and 26 May 2024, Senegal reported 252 confirmed measles cases, with the highest numbers in Louga (56), Matam (41), and Kaffrine (33). The cases were evenly split between females (125) and males (127), ranging from 0.4 to 42 years old, with a median age of 6 years. Most cases (70%) were among children aged nine months to five years. Among these cases, 69% were unvaccinated. Twenty-three districts have reached the epidemic threshold in 2024, with the onset of symptoms of the last case on 29 April 2024 in Saint Louis.									
South Africa	Flood	Ungraded	4-Jun-24	10-Jun-24	11-Jun-24	-	-	22	-
From 1 to 3 June 2024, heavy rainfall, strong winds, and snowfall affected the Eastern Cape and KwaZulu-Natal provinces, causing floods and resulting in significant material damage and fatalities. As of 6 June, 22 people have died, including 11 in the Eastern Cape province and 11 in Durban city in KwaZulu-Natal province. Additionally, 55 people have been injured, 120 people have been displaced to three temporary shelters, and more than 2,000 people have been evacuated in Nelson Mandela Bay Municipality.									
South Africa	Cholera	Grade 3	20-Jan-24	20-Jan-24	10-Jun-24	155	12		0.0%
The cholera outbreak has been ongoing in South Africa since December 4, 2023. It started with imported cases linked to ongoing outbreaks in Southern Africa and two locally transmitted cases from Limpopo in January. As of 17 May 2024, 12 confirmed cases with no deaths have been reported. Limpopo province is most affected with 10 of the cases, Three of the cases were imported from Zimbabwe.									
South Africa	Mpox	Grade 3	15-May-24	15-May-24	19-Jul-24	22	22	3	13.6%
Through IHR notification from South Africa, WHO received a report of one laboratory confirmed mpox case from Johannesburg. This case was confirmed after initial testing by Lancet Laboratory on 9 May 2024. As of 2 July 2024, 22 (10 from KwaZulu Natal; 11 from Gauteng; and 1 from Western Cape Province) mpox cases have been reported in South Africa, with three deaths.									
South Sudan	Food insecurity (Horn of Africa crisis)	Grade 3	18-Dec-20	5-Apr-21	10-Jul-24	-	-	-	-
For 2024, it is estimated that millions of people will still be unable to meet minimum food needs as food stocks could be depleted by April 2024. Additionally, ongoing sporadic conflicts and the influx of returnees and refugees from Sudan is likely to strain food supplies and incomes further, driving severe malnutrition.									
South Sudan	Humanitarian crisis	Protracted 3	15-Aug-16	15-Aug-16	10-Jul-24	9,000,000	-	-	-
The humanitarian situation in South Sudan remains concerning with increasing needs and the number of people requiring assistance. This year, it is estimated that nine million people need humanitarian assistance including 6.3 million for health needs and two million people are internally displaced persons. In 2024, the humanitarian response plan needs US \$ 1.8 billion to reach six million of the most vulnerable people, however, as of 10 June 2024, only 18% of the needed funding has been covered									
South Sudan	Impact of Sudan crisis in South Sudan	Grade 3	15-Apr-23	1-May-23	10-Jul-24	-	-	-	-
Regarding the impact of the ongoing Sudan conflict crisis, as of 30 June, more than 720 000 people crossed into South Sudan from Sudan due to the conflict, with over 560 000 being South Sudanese. the country is now leading in number of people received fleeing conflict in Sudan compared to other Sudan's neighbouring countries									
South Sudan	Hepatitis E	Ungraded	3-Jan-18	1-Jan-19	16-Jun-24	6,807		69	1.0%
The ongoing Hepatitis E outbreak is active in Rubkona county (Bentiu IDPs camp), Unity State since December 2018, in Fangak county, Jonglei State since 2023 and in Western Bahr EL-Ghazal State since February 2023 (week 8). As of week 24, 2024, in Fangak county 655 cases, with 23 reported deaths since the outbreak began in week 2 of 2023; in Rubkona county (Bentiu IDPs camp), since the outbreak began in 2018, 5 619 cases and 27 deaths have been reported; in Western Bahr EL-Ghazal State, a total of 501 cases were reported, with 19 deaths. In Twic county, Warrap State, In March, an outbreak of Hepatitis E was officially declared by the State Ministry of Health, . from week 6 to week 22 of 2024, a total of 32 suspected cases were reported, with no fatalities.									
South Sudan	Measles	Ungraded	23-Feb-22	1-Jan-24	16-Jun-24	2,423	2,29	-	-
In Epi week 24, no new cases/deaths were reported. The cumulative total from week 1 to week 24 is 2 423 suspected measles cases have been reported of which 170 (6.8%) were lab-confirmed, 772 (32.1%) epi-linked, 1 348 clinically compatible.									
South Sudan	Poliomyelitis (cVDPV2)	Grade 2	26-Feb-24	1-Jan-23	24-Jul-24	9	9		0.0%
According to the Global Polio Eradication Initiative (GPEI), no cVDPV2 case was reported this week . There are six cases reported this year and three cases reported last year.									
South Sudan	Yellow fever	Ungraded	24-Dec-23	24-Dec-23	16-Jun-24	130	3	6	4.6%
In Week24 (ending 16 June) , there were no additional data reported from reporting counties in Western Equatoria State. The cumulative cases remain at 130 yellow fever cases (127 suspected and 3 confirmed). Seven counties in Western Equatoria state were affected: Yambio (70), Tambura (26), Nzara (11), Ezo (14), Ibba (3), Maridi (3), and Mvolo (3) Counties.									
Tanzania, United Republic of	Flood	Grade 2	24-Apr-24	24-Apr-24	10-Jul-24	-	-	-	-

In 2024, the rains which started in November 2023 have continued, expanding from four to eight regions: Morogoro, Mbeya, Kilimanjaro, Unguja, Geita, Dar es Salaam, Manyara, and Pwani. The floods have caused further destruction of homes, crops, and agricultural assets. Since January a total of 155 deaths and 236 injured and affected 200 000 people and 51000 households have been reported. In addition, Cyclone Hidaya made landfall on Saturday 4 May, bringing strong winds and heavy rains to the coast south of Dar es Salaam. Pwani, Morogoro, Lindi and Mtwara experienced heavy rainfall, with some areas receiving more than 140% of their average monthly rainfall.									
Tanzania, United Republic of	Cholera	Grade 3	3-Oct-23	5-Sep-23	13-Jul-24	4,306		81	1.9%
Since 5 September 2023 cholera outbreaks have been reported in 22 regions (Mara, Arusha, Kilimanjaro, Kigoma, Kagera, Singida, Simiyu, Shinyanga, Tabora, Ruvuma, Mwanza, Geita, Rukwa, Dodoma, Manyara, Morogoro, Katavi, Pwani, Mtwara, Tanga, Lindi and Dar es Salaam) in Tanzania Mainland, where a total of 4 306 cases and 81 deaths (CFR 1.9%) reported. Out of 22 regions, Cholera outbreak was declared over in 15 regions (Mtwara, Katavi, Arusha, Kilimanjaro, Morogoro, Pwani, Geita, Mwanza, Simiyu, Kagera, Ruvuma, Tanga, Rukwa, Dar es Salaam and Tabora).									
Togo	Dengue	Grade 3	28-Jun-24	28-Jun-24	28-Aug-24		643		
In week 28, 89 out of 203 suspected dengue cases were confirmed, bringing the total to 643 cases. Patients ranged from 3 to 79 years old. To manage the dengue epidemic, an incident management system and a one-month action plan have been implemented, and a webinar for healthcare providers was conducted on July 22nd.									
Togo	Measles	Ungraded	14-Mar-24	14-Mar-24	16-Jun-24	628	199	1	0.2%
In Togo there is an ongoing measles outbreak since week 5 of 2024 with 13 districts affected. As at week 23 in 2024, there are a total of 628 suspected cases reported, 199 confirmed measles cases, 1 death reported among the confirmed cases in Oti South district									
Uganda	Food insecurity (Horn of Africa crisis)	Grade 3	17-Feb-22	1-Jan-22	12-Jun-24	-	-	-	-
In Uganda, Karamoja is the most vulnerable region to climate-related shocks and hazards, which significantly contribute to persistently low food and livestock production levels. The situation is expected to improve in the projected period (August 2024 – February 2025) due to seasonal gains and projected production; however, the forecasted La Nina event might impact the situation negatively.									
Uganda	Anthrax	Grade 2	13-Jun-24	4-Jun-24	14-Jul-24	11	11		0.0%
There is an ongoing anthrax outbreak reported in Uganda affecting Amudat districts since 4 June 2024. The outbreak in Kween was controlled. Eight cases have been confirmed in Amudat as of 14 July 2024.									
Uganda	Cholera	Grade 3	13-May-24	11-May-24	26-May-24	57	15	4	7.0%
The cholera outbreak in Kyotera district is still ongoing since 5 May 2024. As of 26 May 2024, a total of 57 cases ,15 confirmed, and four deaths are reported.									
Uganda	Crimean-Congo haemorrhagic fever (CCHF)	Ungraded	12-Feb-24	24-Apr-24	14-Jul-24	6	2		0.0%
As of 14 July 2024, the Crimean-Congo Hemorrhagic fever outbreak is still active in Kasese district, with five cases, one confirmed and no deaths reported. A new positive case was reported on 11 July 2024 from Kiboga district, bringing the total number of cases to six, with two confirmed cases.									
Uganda	Measles	Ungraded	4-Oct-23	5-Mar-24	14-Jul-24	325	24	10	3.1%
As of 14 July 2024 (week 28), the measles outbreak is ongoing in the following districts: Moroto (261 cases, 13 confirmed and six deaths); Sembabule (48 cases, three confirmed and three deaths) and Kibuku (five cases, four confirmed). A new district, Kanungu, reported 11 cases (four confirmed, one death). Cumulatively, 325 cases, 24 confirmed, and 10 deaths are reported from four districts.									
Uganda	Rift Valley Fever (RVF)	Ungraded	24-May-24	23-Feb-24	14-Jul-24	16	5	5	31.3%
As of 14 July 2024 (week 28), four districts: Kyegegwa (7), Mubende (5), Sembabule (3), and Ntungamo (1) are experiencing Rift Valley Fever outbreaks (RVF), with a cumulative number of 16 cases, five confirmed, and five deaths since 1 March 2024.									
Uganda	Undiagnosed disease	Ungraded	8-Jul-24	8-Jul-24	8-Jul-24	16		3	18.8%
We received information related to undiagnosed illness resulting deaths in Uganda, in Kawempe resulting in 16 cases and 3 deaths as of 08 July. So far, the samples tested negative for all VHF and now waiting for more results for other tests that were requested. The sick children were taken to health facilities, and they are improving. During case investigation, there was no epi link among those who died.									
Zambia	Drought/food insecurity	Ungraded	8-Mar-24	15-Jan-24	27-May-24	-	-	-	-
On 29 February 2024, the Zambia President declared the drought the country is currently facing a national disaster and emergency as it had devastated food production and power generation and the country struggles to recover a recent cholera outbreak. As of 27 May 2024, 84 out of the 116 districts in Zambia are affected by the drought. According to a recent rapid assessment and the President's Drought Response Appeal on 16 April 2024, nearly 6.6 million people are now in urgent need of humanitarian assistance. Moreover, the Integrated Food Security Phase Classification (IPC) report released in November 2023 projected that Zambia would have more than 2 million people at IPC Phase 3 or above by March 2024. It is also projected that the drought will lead to a power deficit and affect ground and surface water levels, with severe consequences for sectors beyond agriculture, as more than 80% of Zambia's electricity generation comes from hydropower.									
Zambia	Cholera	Grade 3	24-Jan-23	20-Jan-23	12-May-24	23,238	23,238	740	3.2%
The current cholera outbreak started with Lusaka Province confirming cases in the cholera-prone areas (peri-urban). From October 2023 to 6 May, 2024, nine provinces have reported cases of cholera with seven provinces confirming cholera outbreaks. A total of 40 districts have confirmed local transmission. Cumulative cases stand at 23 221 with 740 deaths (CFR 3.2%).									
Zambia	Measles	Ungraded	13-Jun-22	13-Jun-22	24-Jun-24	3,647	158		0.0%
As of 23 June, 2024, Zambia has recorded a cumulative total of 3 647 suspected cases of measles with 158 confirmed since the start of 2024.									
Zimbabwe	Drought/food insecurity	Ungraded	5-Apr-24	5-Apr-24	20-May-24	-	-	-	-
On 3 April 2024, Zimbabwe authorities declared state of disaster over a devastating drought that's sweeping across much of southern Africa due to El Nino phenomenon. It needs \$ two billion for humanitarian assistance. Due to the El Niño-induced drought more than 80% of country received below normal rainfall.									
Zimbabwe	Anthrax	Grade 2	13-Nov-23	14-Nov-23	5-May-24	784		1	0.1%

As of 5 May 2024, there have been a total of 784 cases reported in Zimbabwe. Ten districts have reported cases since beginning of 2023 with the majority of cases coming from Gokwe North (63.5%) and Gokwe South (32.6%). The confirmed death was reported in 2023, from Gokwe South.

Zimbabwe	Cholera	Grade 3	12-Feb-23	12-Feb-23	28-Jul-24	34,55	4,221	719	2.1%
----------	---------	---------	-----------	-----------	-----------	-------	-------	-----	------

The first cholera outbreak in the country in 2023 started on the 12 February 2023. Cumulatively there were 34 550 cholera cases with 719 deaths (CFR 2.0%) as of 28 July 2024. The outbreak has now spread to more than the 17 traditional cholera hotspot districts.

Closed Events

Kenya	Flood	Grade 2	24-Apr-24	24-Apr-24	13-Jun-24	306,522	306,522	315	
-------	-------	---------	-----------	-----------	-----------	---------	---------	-----	--

Kenya is experiencing heavy rains and flash floods since mid April 2024 resulting in loss of lives, property and disruption of services. A total of 41 Counties have been affected, with major flooding occurring in Nairobi, Kiambu and Machakos Counties. More than 314 people died, 188 were injured, 21 were missing, 58 641 people were displaced, and nearly 306 522 were affected across the country. Humanitarian partners are supported the Government-led response to scale up relief efforts for the affected population. As of 20 July 2024, the acute phase of the floods is over, the Kenya government and partners are conducting post-disaster need assessment and the event is closed.

Malawi	Cholera	Grade 3	3-Mar-22	3-Mar-22	30-Apr-24	59,361	59,361	1,772	3.0%
--------	---------	---------	----------	----------	-----------	--------	--------	-------	------

Twenty-nine districts have reported cholera cases since March 2022 in the Machinga district. As of 30 June 2024, a cumulative total of 59 376 cases and 1 772 deaths (CFR 3.0%) have been reported since the onset of the outbreak. In June 2024, new cases decreased by 45.5% from 11 in May to six. No death has been reported since March this year and cholera preparedness activities are ongoing, therefore the event is closed.

†Grading is an internal WHO process, based on the Emergency Response Framework. For further information, please see the Emergency Response Framework: <http://www.who.int/hac/about/erf/en/>.

Data are taken from the most recently available situation reports sent to WHO AFRO. Numbers are subject to change as the situations are dynamic.

© WHO Regional Office for Africa

This is not an official publication of the World Health Organization.

Correspondence on this publication may be directed to:

Dr Etien Luc Koua

Programme Area Manager, Health Emergency Information and Risk Assessment Programme.

WHO Emergency Preparedness and Response

WHO Regional Office for Africa

P O Box. 06 Cité du Djoué, Brazzaville, Congo

Email: afrooutbreak@who.int

Requests for permission to reproduce or translate this publication – whether for sale or for non-commercial distribution – should be sent to the same address.

WCO Contributors

- HLABANA Albert (Lesotho)
- NTSOAKI Mokete (Lesotho)
- MUIANGA Claudio (Guinea)
- KAMBIRE-DIARRA MARIE (Guinea)

AFRO Contributors

G. Sie Williams
J. Nguna
T. Nagbe
E. Kibangou
D. Gianni-Ferrari
K. Freddy Kavoga
K. Jean-Paul
R. Mangosa Zaza
G. Akpan
C. Okot

Editorial Advisory Group

Dr Salam Gueye, *Regional Emergency Director*
E. Koua
D. Chamla
F. Braka

Data sources

Data and information is provided by Member States through WHO Country Offices via regular situation reports, teleconferences and email exchanges. Situations are evolving and dynamic therefore numbers stated are subject to change.